



Valencia Estates

1175 CASPER CIRCLE • LOT 9

Located in the picturesque hills above the community of Corona, situated at the base of the Cleveland National Forest in western Riverside County, Valencia Estates is just 15 minutes from Orange County and Ontario International Airport is a short 25-minute commute; Santa Ana, Long Beach and Los Angeles Airports are all within 45 minutes of your new estate.

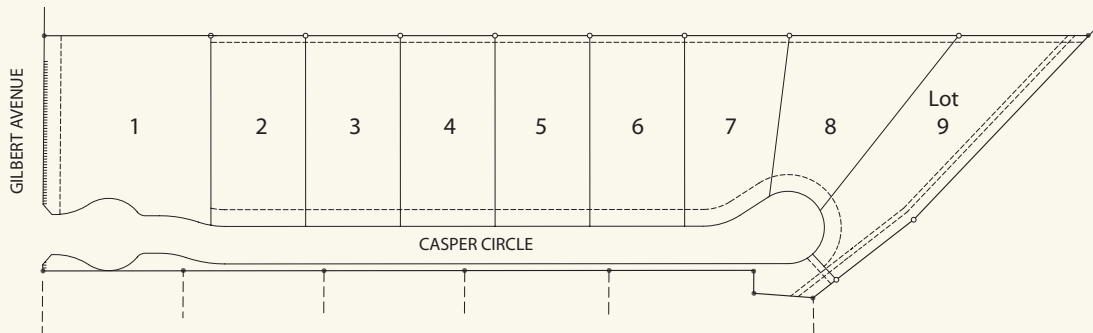
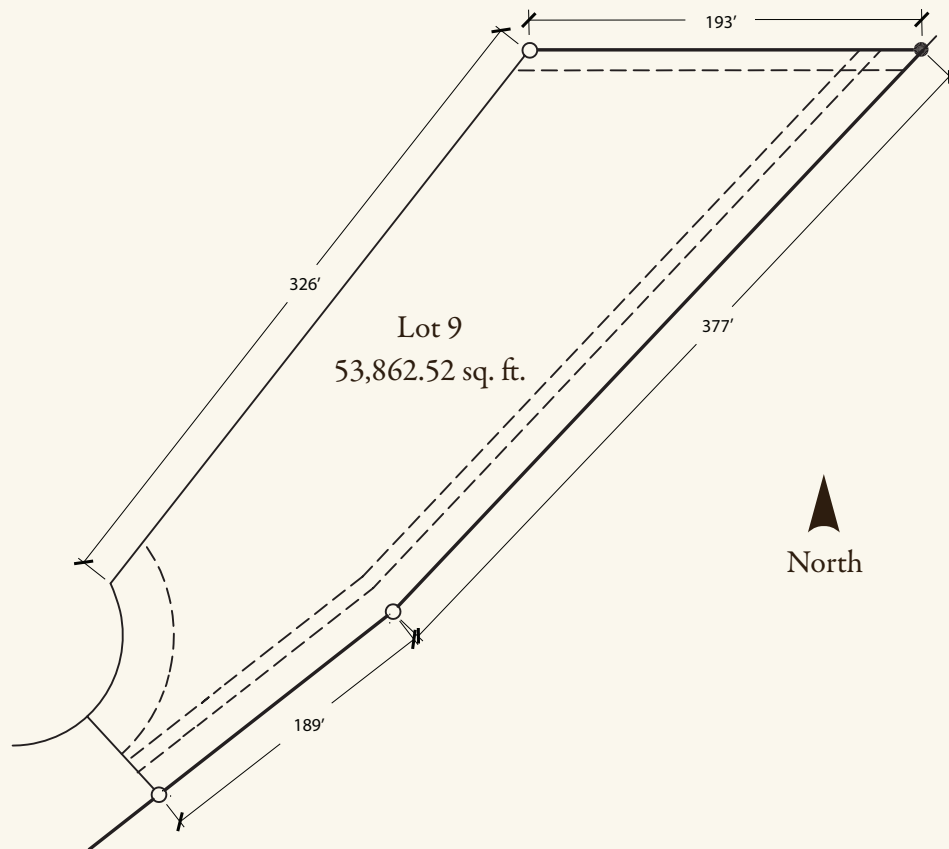
Our custom home lots offer the opportunity to build a view estate up to 15,000 square feet with design inspiration from Provence; Tuscany; Santa Barbara; and Northern Italy. This community of 9 homes will provide residents a premiere location in the fast growing Corona estate community.

The emphasis on security and privacy is one of the many amenities that make Valencia Estates the region's most coveted address. With a private gated entrance and superior landscaping plans with terraced building pads, owners will find privacy and seclusion. At sunset, sit back and watch the changing light – amber, crimson, deepest plum – fade into the onyx backdrop for constellations of city and sky.

Information deemed reliable but not guaranteed. Buyer to verify all information.



1175 CASPER CIRCLE · LOT 9
53,800 Square Foot Net



Information deemed reliable but not guaranteed. Buyer to verify all information.